

balcony

- Spacious and private
- Breathtaking view of the Gulf of Mexico

living/dining room

- Open living and dining area
- Southwest facing view
- 9 foot ceilings (approximate)
- Carpeted
- 8 foot sliding glass door

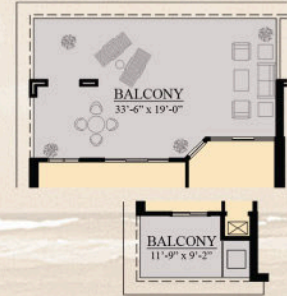
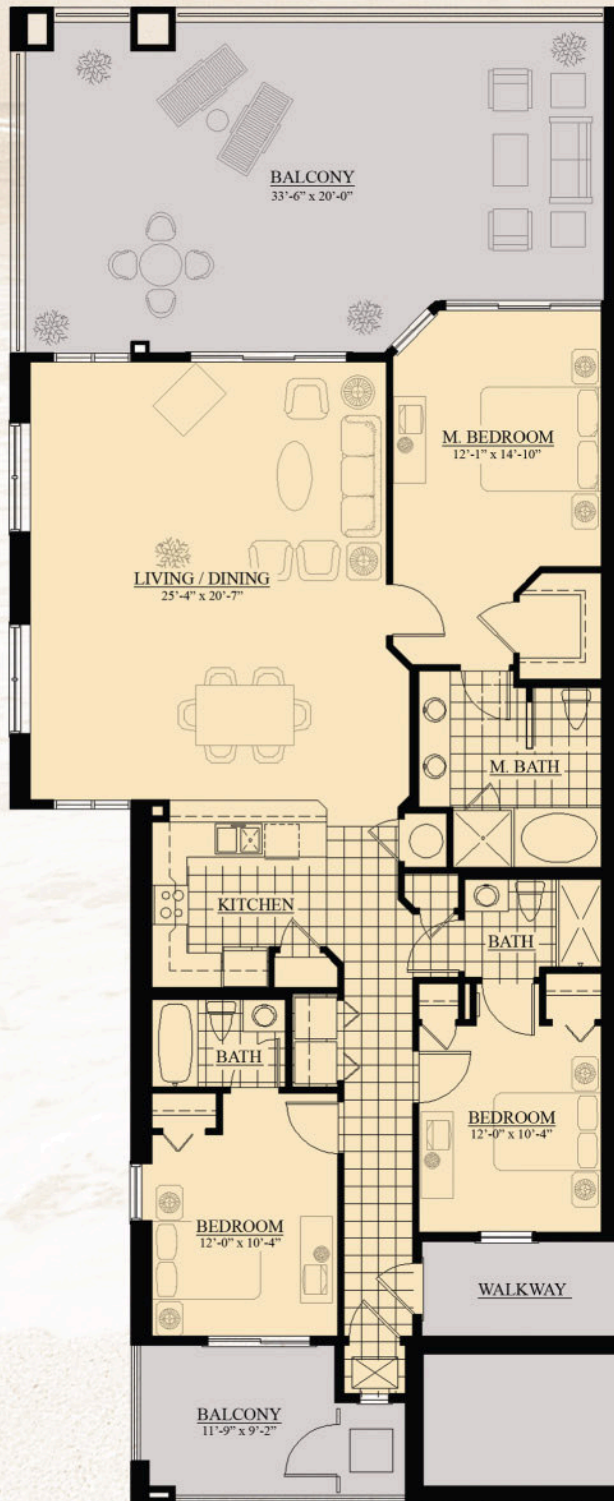
kitchen

- Granite countertops
- Breakfast bar
- Raised panel cabinets
- Ceramic tile floor
- GE Profile™ or equivalent:
 - Refrigerator with ice maker
 - Self cleaning oven/range
 - Dishwasher
 - Built-in microwave

bedroom

- 9 foot ceilings (approximate)
- Carpeted
- Master bedroom with private bath and 8 foot sliding glass door to the south balcony
- Second bedroom has private bath and window overlooking the north balcony
- Third bedroom has adjoining bath and window overlooking the north balcony
- Ceramic tile in bathrooms

Gross heated & cooled	1763 sqft
Gross balcony	792 sqft
Total	2555 sqft
Net heated & cooled	1611 sqft
Balcony	718 sqft
Total	2329 sqft



E2 BALCONY

Gross heated & cooled	1763 sqft
Gross balcony	784 sqft
Total	2547 sqft
Net heated & cooled	1611 sqft
Balcony	718 sqft
Total	2329 sqft



E3 BALCONY

Gross heated & cooled	1763 sqft
Gross balcony	479 sqft
Total	2242 sqft
Net heated & cooled	1611 sqft
Balcony	468 sqft
Total	2079 sqft



E4 BALCONY

Gross heated & cooled	1763 sqft
Gross balcony	372 sqft
Total	2135 sqft
Net heated & cooled	1611 sqft
Balcony	372 sqft
Total	1983 sqft



All square footages are approximate. Developer reserves the right to make any modifications as it deems necessary.

Ariel
DUNES II