

*balcony*

- Spacious and private
- Breathtaking view of the Gulf of Mexico

*living/dining room*

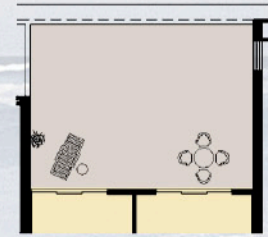
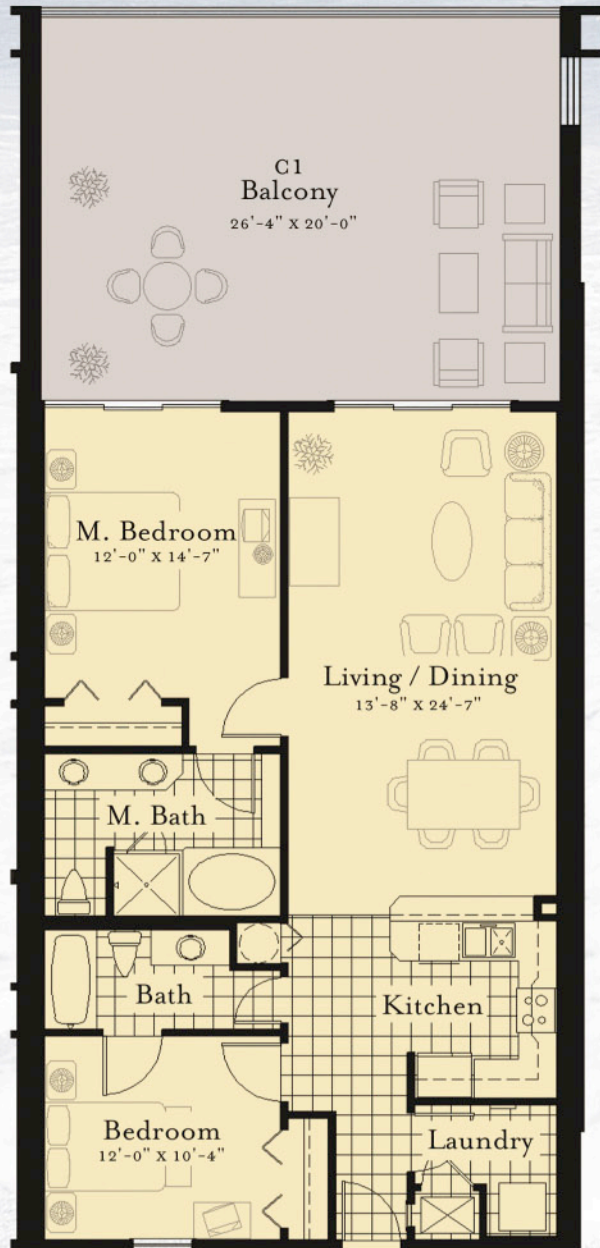
- Open living and dining area
- South facing view
- 9 foot ceilings (approximate)
- Carpeted
- 8 foot sliding glass door

*kitchen*

- Granite countertops
- Breakfast bar
- Raised panel cabinets
- Ceramic tile floor
- GE Profile™ or equivalent:
  - Refrigerator with ice maker
  - Self cleaning oven/range
  - Dishwasher
  - Built-in microwave

*bedroom*

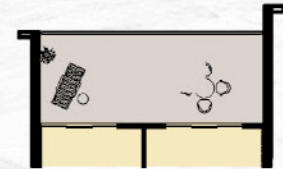
- 9 foot ceilings (approximate)
- Carpeted
- Master bedroom with private bath and 8 foot sliding glass door to the south balcony
- Second bedroom has window overlooking the north balcony
- Ceramic tile in bathrooms



**C2 BALCONY**

Gross heated & cooled	1175 sqft
Gross balcony	546 sqft
Total	1721 sqft

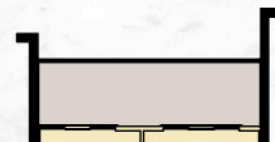
Net heated & cooled	1084 sqft
Balcony	508 sqft
Total	1592 sqft



**C3 BALCONY**

Gross heated & cooled	1175 sqft
Gross balcony	300 sqft
Total	1475 sqft

Net heated & cooled	1084 sqft
Balcony	285 sqft
Total	1369 sqft



**C4 BALCONY**

Gross heated & cooled	1175 sqft
Gross balcony	218 sqft
Total	1393 sqft

Net heated & cooled	1084 sqft
Balcony	210 sqft
Total	1294 sqft

Gross heated & cooled	1175 sqft
Gross balcony	546 sqft
Total	1721 sqft

Net heated & cooled	1084 sqft
Balcony	521 sqft
Total	1605 sqft



All square footages are approximate. Developer reserves the right to make any modifications as it deems necessary.

*Ariel*  
**DUNES**