

balcony

- Spacious and private
- Breathtaking view of the Gulf of Mexico

living/dining room

- Open living and dining area
- South facing view
- 9 foot ceilings (approximate)
- Carpeted
- 8 foot sliding glass door

kitchen

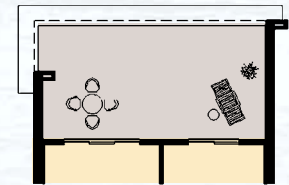
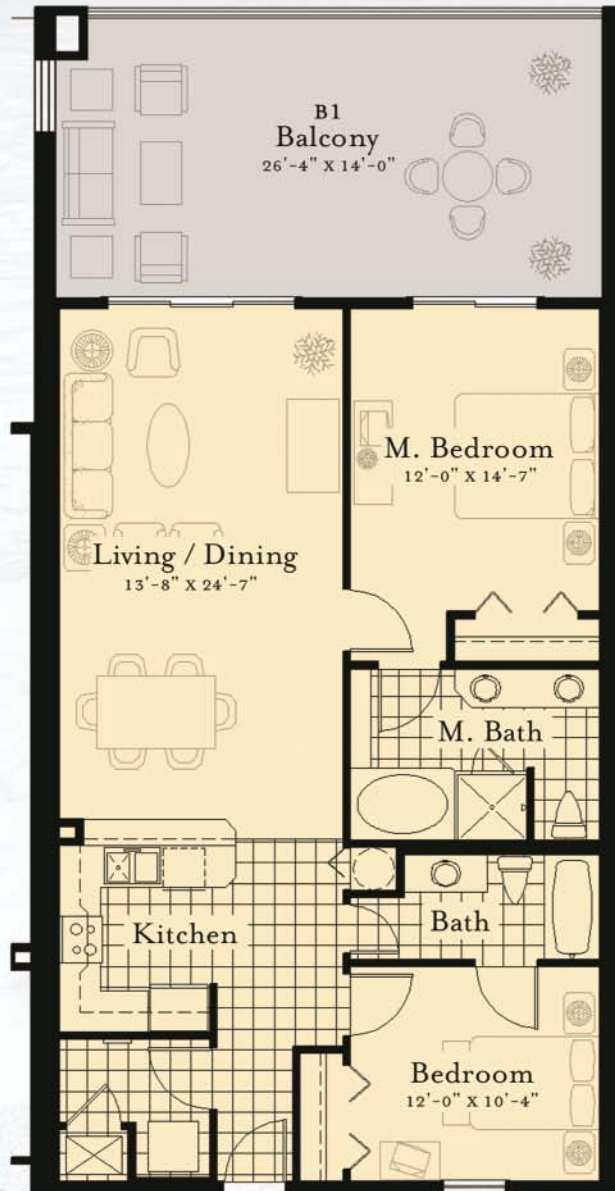
- Granite countertops
- Breakfast bar
- Raised panel cabinets
- Ceramic tile floor
- GE Profile™ or equivalent:
 - Refrigerator with ice maker
 - Self cleaning oven/range
 - Dishwasher
 - Built-in microwave

bedroom

- 9 foot ceilings (approximate)
- Carpeted
- Master bedroom with private bath and 8 foot sliding glass door to the south balcony
- Second bedroom has window overlooking the north balcony
- Ceramic tile in bathrooms

Gross heated & cooled 1175 sqft
 Gross balcony 382 sqft
 Total 1557 sqft

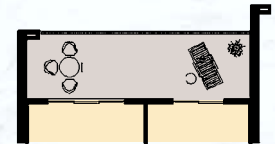
Net heated & cooled 1084 sqft
 Balcony 364 sqft
 Total 1448 sqft



B2 BALCONY

Gross heated & cooled 1175 sqft
 Gross balcony 382 sqft
 Total 1557 sqft

Net heated & cooled 1084 sqft
 Balcony 354 sqft
 Total 1438 sqft



B3 BALCONY

Gross heated & cooled 1175 sqft
 Gross balcony 218 sqft
 Total 1393 sqft

Net heated & cooled 1084 sqft
 Balcony 207 sqft
 Total 1291 sqft



All square footages are approximate.
 Developer reserves the right to make any modifications as it deems necessary.

Ariel
DUNES