

balcony

- Spacious and private
- Breathtaking view of the Gulf of Mexico

living/dining room

- Open living and dining area
- South facing view
- 9 foot ceilings (approximate)
- Carpeted
- 8 foot sliding glass door

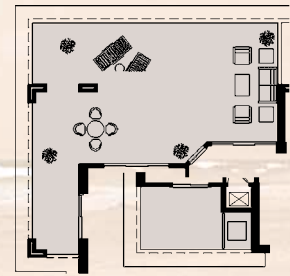
kitchen

- Granite countertops
- Breakfast bar
- Raised panel cabinets
- Ceramic tile floor
- GE Profile™ or equivalent:
 - Refrigerator with ice maker
 - Self cleaning oven/range
 - Dishwasher
 - Built-in microwave

bedroom

- 9 foot ceilings (approximate)
- Carpeted
- Master bedroom with private bath and 8 foot sliding glass door to the south balcony
- Second bedroom has private bath and window overlooking the north balcony
- Third bedroom has adjoining bath and window overlooking the north balcony
- Ceramic tile in bathrooms

| | |
|-----------------------|-----------|
| Gross heated & cooled | 1588 sqft |
| Gross balcony | 885 sqft |
| Total | 2473 sqft |
| Net heated & cooled | 1435 sqft |
| Balcony | 864 sqft |
| Total | 2299 sqft |



E1 BALCONY

| | |
|-----------------------|-----------|
| Gross heated & cooled | 1588 sqft |
| Gross balcony | 885 sqft |
| Total | 2473 sqft |

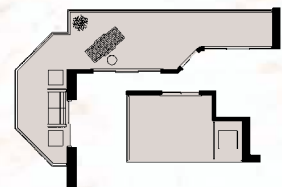
| | |
|---------------------|-----------|
| Net heated & cooled | 1435 sqft |
| Balcony | 815 sqft |
| Total | 2250 sqft |



E2 BALCONY

| | |
|-----------------------|-----------|
| Gross heated & cooled | 1588 sqft |
| Gross balcony | 571 sqft |
| Total | 2159 sqft |

| | |
|---------------------|-----------|
| Net heated & cooled | 1435 sqft |
| Balcony | 556 sqft |
| Total | 1991 sqft |



E3 BALCONY

| | |
|-----------------------|-----------|
| Gross heated & cooled | 1588 sqft |
| Gross balcony | 420 sqft |
| Total | 2009 sqft |

| | |
|---------------------|-----------|
| Net heated & cooled | 1435 sqft |
| Balcony | 407 sqft |
| Total | 1842 sqft |

Ariel
DUNES



All square footages are approximate. Developer reserves the right to make any modifications as it deems necessary.